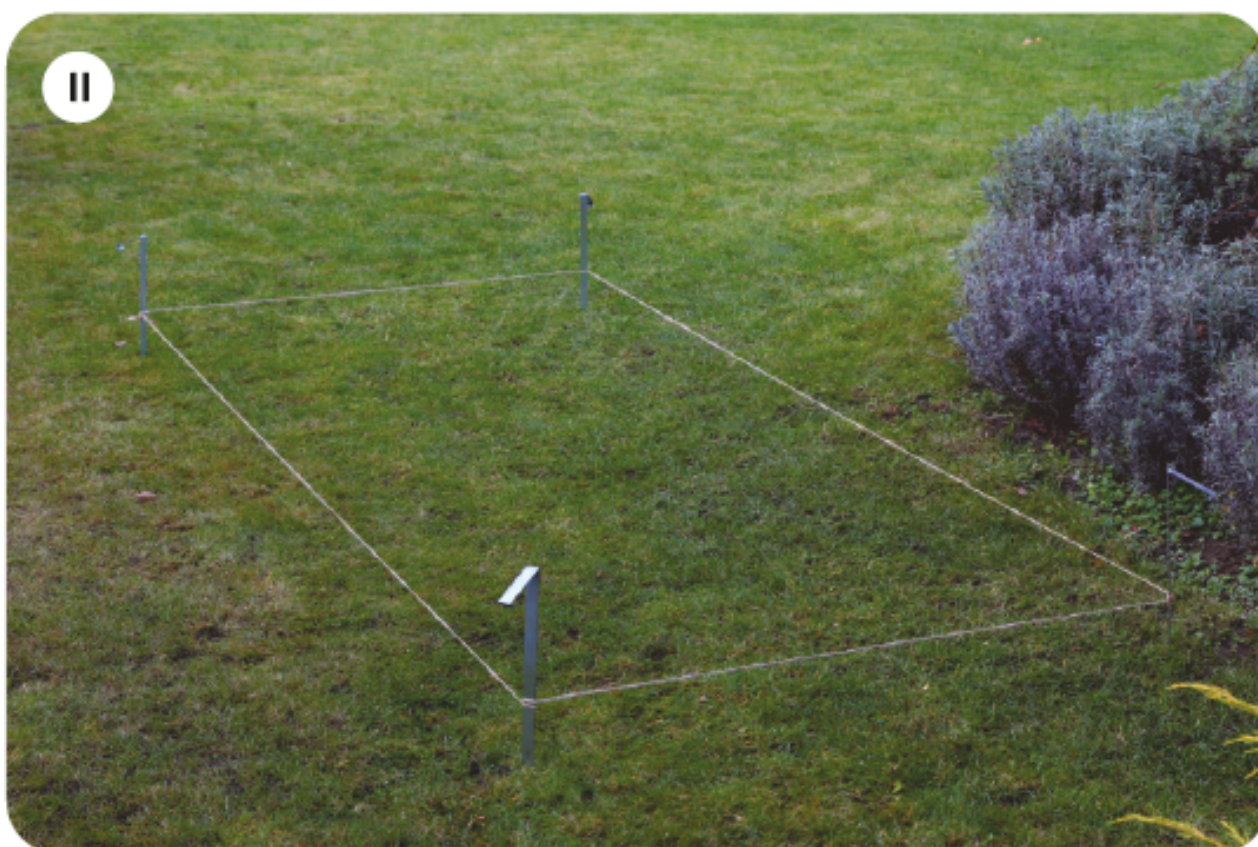
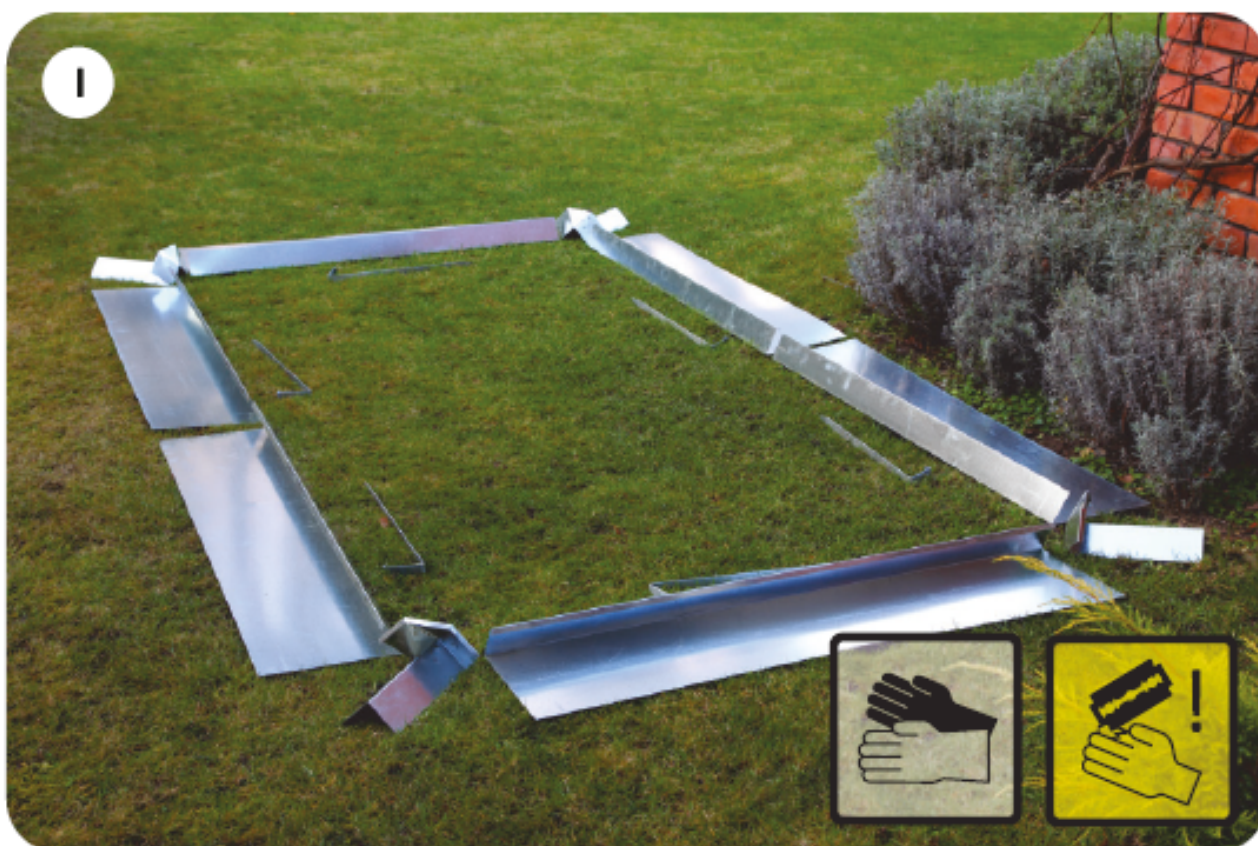




 SCHNECKEN-ZAUN
 CLÔTURE À LIMACES
"ZINKLINE"



① Bringen Sie Die Kanten untereinander...

Amenez les arêtes l'une en dessous de l'autre ...

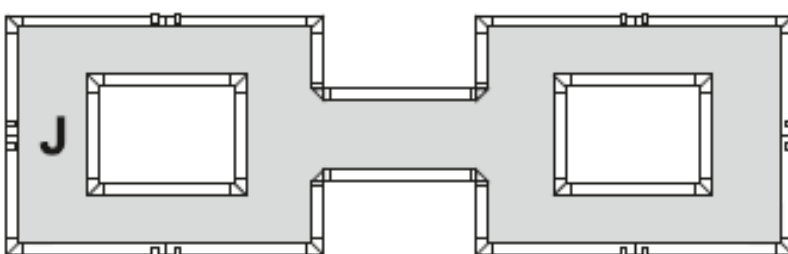
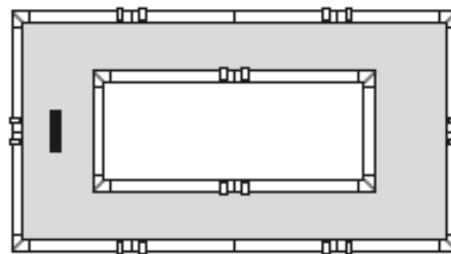
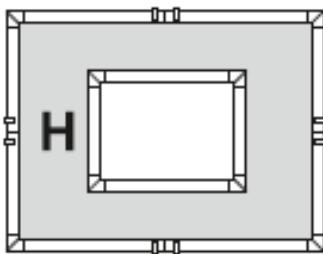
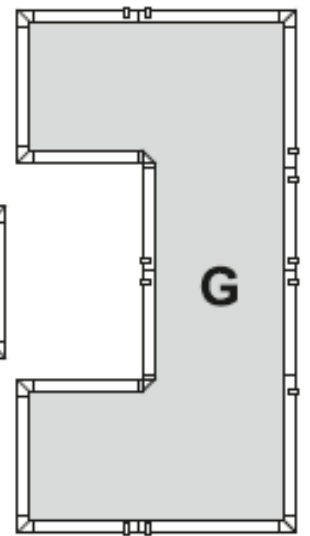
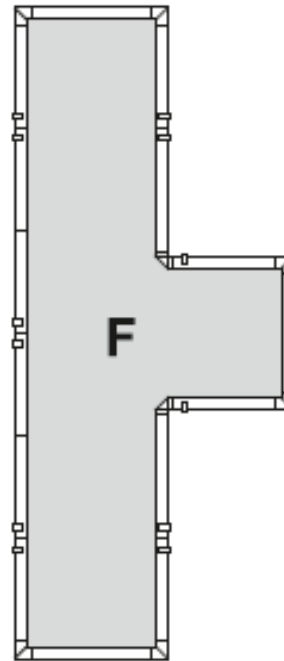
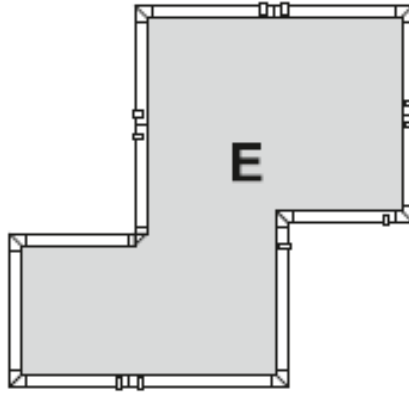
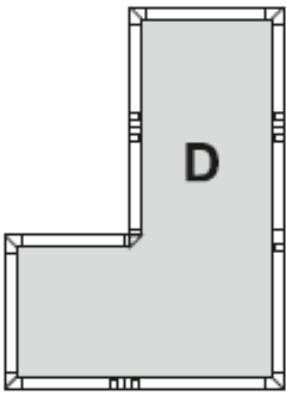
② ... und drücken Sie die Profile fest zusammen, FERTIG!

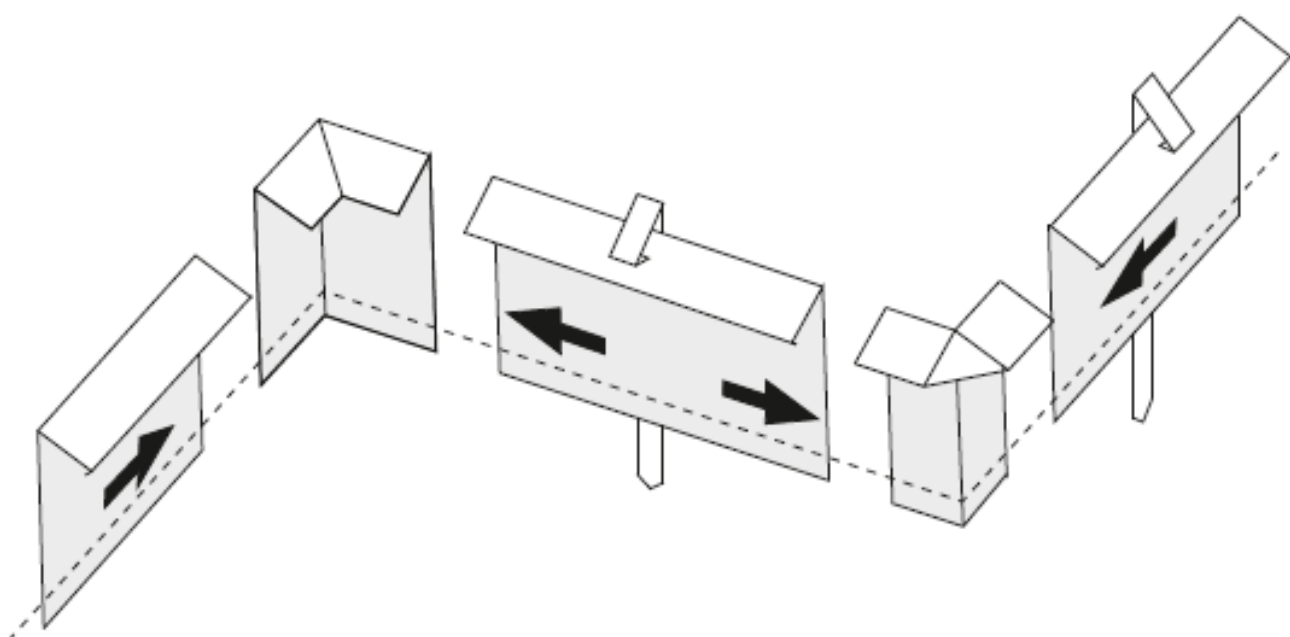
... et appuyez les profilés l'un contre l'autre, C'EST TOUT!





VARIANTEN VARIANTES





A
B
C
D
E
F
G
H
I
J